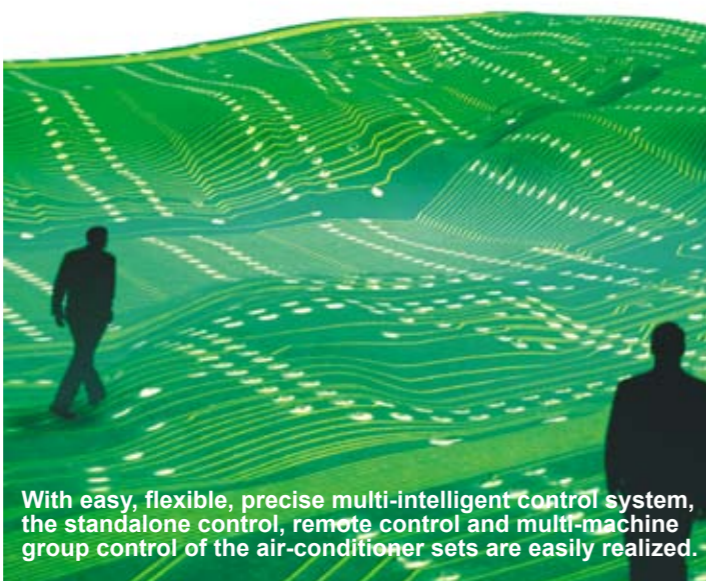




Combination of global strength

Carrier Masterpiece series is a product excellent in design and manufacturing among the similar products and introduced after years of efforts.

Intelligent and efficient control



With easy, flexible, precise multi-intelligent control system, the standalone control, remote control and multi-machine group control of the air-conditioner sets are easily realized.

Advanced design

- Collaborate with global specialized lab in the design of key parts; utilize finite element calculation to optimize the design.



- The electrically controlled cabinet of the compressor is at low-temperature part of compressor. The electric unit has a long service life.

Self-adapting control

- The Carrier patented self-adapting control avoids the over-cycling of compressor, highly increasing the life span of the compressor.

- When the pressure of the condenser abnormally heightens, the compressor can automatically relieve pressure. When accident occurs (e.g. the fin coil of the condenser blockades; the fan malfunctions), the chiller can automatically regulate the cold quantity and continuously run reliably.

Strict durability test

- Salt spray corrosion resistance test;

- Over-time fatigue test for pipeline and fan support of compressor;

- Simulation transport test in reference to the military product test standard, with effect equivalent to 4000 km transport on the truck.



ISO14001



ISO9001

PRO-DIALOG PLUS control

The Pro-Dialog Plus microcomputer control system designed specifically for the optimization of the air cooling cold water chiller to combine perfectly the simple and quick operation and advanced and complex central air-condition control concept. The system monitors in real time the running parameters of the chiller, accurately manages the compressor, electronic expansion valve, fan and pump (with in-built hydraulic module option) to run in the best energy utilization rate.

Energy management

- Inner clock module can control the activation/stop of the cold water chiller and the running of the setting point of the second work;
- Auto-regulate the running parameter setting according to the temperature of the external conditions or that of the backwater.
- The two chillers primarily or secondarily control, which can balance the running time of the two chillers, and realize auto-switch when one chiller is at fault.

Easy operation

- The graphic operation interface visually shows the main running parameter of the equipment: temperature, pressure, setting point, running time of the compressor, etc.
- The 10 menu buttons on the control panel allow direct management of the running of the chiller, the easy output of history record of the error, and the quick and comprehensive auto-diagnosis of the chiller.

Remote management (standard)

Pro-Dialog Plus provides RS485 standard serial telecommunication port. Its simple connection with Carrier CCN control network may realize advanced remote management, monitor and diagnosis: start/stop, dual work conditions setting, energy demand limit, user safety interlock, water pump control and running switch, heat recycling, running indication, error clue, error warning, etc.

- Energy management module (option) can also realize other remote managements of the chiller: room temperature control, work condition value regulation, energy demand limit, user safety interlock, close of timing procedure, stop, indication of cooling quantity, running status of compressor, etc.

Technical parameter table

30RB technical parameter	162G	192G	232G	262G	342G	402G	522G	672G	802G
Nominal cooling quantity	kW	164	199	224	266	338	403	523	674
Length of chiller	mm	2410	2410	2410	2410	3604	3604	4798	5992
Width of chiller	mm	2253	2253	2253	2253	2253	2253	2253	2253
Height of chiller	mm	2297	2297	2297	2297	2297	2297	2297	2297

30RB technical parameter	162G	202G	232G	302G	372G	432G	462G
Nominal cooling quantity	kW	165	197	216	286	344	405
Nominal heating quantity	kW	179	221	228	319	379	468
Length of chiller	mm	2410	2410	2410	3604	3604	4798
Width of chiller	mm	2253	2253	2253	2253	2253	2253
Height of chiller	mm	2297	2297	2297	2297	2297	2297

Options and accessories		30RB	30RQ
Option	High lift hydraulic module (sing or double pump)	✓	✓
	Low noise option	✓	✓
	Super-low noise option	✓	✓
	Protection grille	✓	
	Freeze-proof electric heating for evaporator	✓	
	Gold Fin Treatment	✓	



Create a comfortable and beautiful world with you.....

As the world leader in heating, ventilation, air conditioning and refrigeration for more than 100 years, Carrier's commitment to continually improving the quality of comfort we provide to our customers has changed the way we live, work, play and breathe.

At the same time, we shoulder more responsibilities——

Carrier Corporation identified six specific areas of concentration that directly impact how we, as a world manufacturer, balance our customers' needs for comfort with the environment's needs for responsible consumption. Each area is described below.

At Carrier Corporation, we believe that, for generations to come, success will be measured not only by the quality of our products and systems, but also by how we have improved the quality of life.



Masterpiece of Carrier Share with the World



30RB/RQ

Scroll Air-cooled (Heat pump) Liquid Chiller

www.carrier.com.cn

P-30RB/RQ-0603-01(L)



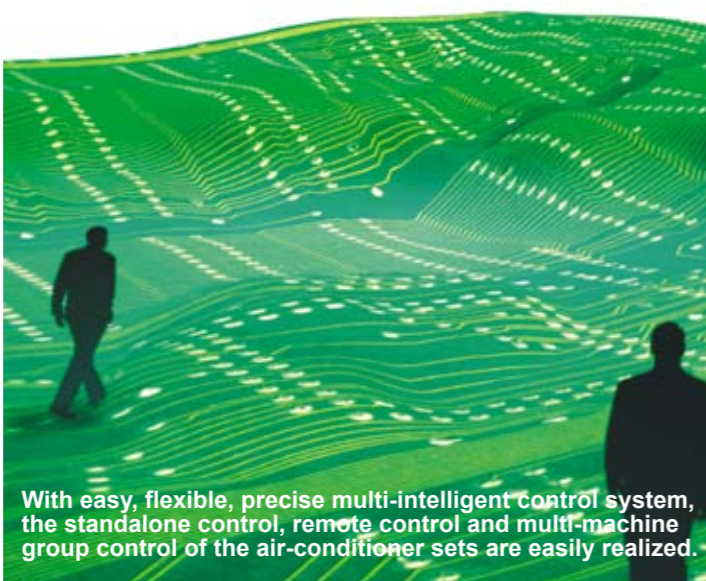
Carrier reserves the right to make changes without prior notice. © All Rights Reserved. Carrier



Combination of global strength

Carrier Masterpiece series is a product excellent in design and manufacturing among the similar products and introduced after years of efforts.

Intelligent and efficient control



With easy, flexible, precise multi-intelligent control system, the standalone control, remote control and multi-machine group control of the air-conditioner sets are easily realized.

Advanced design

- Collaborate with global specialized lab in the design of key parts; utilize finite element calculation to optimize the design.



- The electrically controlled cabinet of the compressor is at low-temperature part of compressor. The electric unit has a long service life.

Self-adapting control

- The Carrier patented self-adapting control avoids the over-cycling of compressor, highly increasing the life span of the compressor.

- When the pressure of the condenser abnormally heightens, the compressor can automatically relieve pressure. When accident occurs (e.g. the fin coil of the condenser blockades; the fan malfunctions), the chiller can automatically regulate the cold quantity and continuously run reliably.

Strict durability test

- Salt spray corrosion resistance test;

- Over-time fatigue test for pipeline and fan support of compressor;

- Simulation transport test in reference to the military product test standard, with effect equivalent to 4000 km transport on the truck.



ISO14001



ISO9001

PRO-DIALOG PLUS control

The Pro-Dialog Plus microcomputer control system designed specifically for the optimization of the air cooling cold water chiller to combine perfectly the simple and quick operation and advanced and complex central air-condition control concept. The system monitors in real time the running parameters of the chiller, accurately manages the compressor, electronic expansion valve, fan and pump (with in-built hydraulic module option) to run in the best energy utilization rate.

Energy management

- Inner clock module can control the activation/stop of the cold water chiller and the running of the setting point of the second work;
 - Auto-regulate the running parameter setting according to the temperature of the external conditions or that of the backwater.
 - The two chillers primarily or secondarily control, which can balance the running time of the two chillers, and realize auto-switch when one chiller is at fault.

Easy operation

- The graphic operation interface visually shows the main running parameter of the equipment: temperature, pressure, setting point, running time of the compressor, etc.
 - The 10 menu buttons on the control panel allow direct management of the running of the chiller, the easy output of history record of the error, and the quick and comprehensive auto-diagnosis of the chiller.

Remote management (standard)

Pro-Dialog Plus provides RS485 standard serial telecommunication port. Its simple connection with Carrier CCN control network may realize advanced remote management, monitor and diagnosis: start/stop, dual work conditions setting, energy demand limit, user safety interlock, water pump control and running switch, heat recycling, running indication, error clue, error warning, etc.
 - Energy management module (option) can also realize other remote managements of the chiller: room temperature control, work condition value regulation, energy demand limit, user safety interlock, close of timing procedure, stop, indication of cooling quantity, running status of compressor, etc.

Technical parameter table

30RB technical parameter	192	232	262	342	402	522	672	802	
Nominal cooling quantity	kW	193	222	256	325	388	503	648	753
Length of chiller	mm	2410	2410	2410	3604	3604	4798	5992	7186
Width of chiller	mm	2253	2253	2253	2253	2253	2253	2253	2253
Height of chiller	mm	2297	2297	2297	2297	2297	2297	2297	2297

30RB technical parameter	162	202	232	302	372	432	462	
Nominal cooling quantity	kW	163	191	214	265	315	376	612
Nominal heating quantity	kW	177	215	226	303	366	445	505
Length of chiller	mm	2410	2410	2410	3604	3604	4798	4798
Width of chiller	mm	2253	2253	2253	2253	2253	2253	2253
Height of chiller	mm	2297	2297	2297	2297	2297	2297	2297

Options and accessories		30RB	30RQ
Option	High lift hydraulic module (sing or double pump)	✓	✓
	Low noise option	✓	✓
	Super-low noise option	✓	✓
	Protection grille	✓	
	Freeze-proof electric heating for evaporator	✓	
	Gold Fin Treatment	✓	



Create a comfortable and beautiful world with you.....

As the world leader in heating, ventilation, air conditioning and refrigeration for more than 100 years, Carrier's commitment to continually improving the quality of comfort we provide to our customers has changed the way we live, work, play and breathe.

At the same time, we shoulder more responsibilities——

Carrier Corporation identified six specific areas of concentration that directly impact how we, as a world manufacturer, balance our customers' needs for comfort with the environment's needs for responsible consumption. Each area is described below.

At Carrier Corporation, we believe that, for generations to come, success will be measured not only by the quality of our products and systems, but also by how we have improved the quality of life.



Masterpiece of Carrier Share with the World



30RB/RQ

Scroll Air-cooled (Heat pump) Liquid Chiller

www.carrier.com.cn

P-30RB/RQ-0603-01(L)



Carrier reserves the right to make changes without prior notice. © All Rights Reserved. Carrier